



PENTHOUSE A | BLQ 2

- Usable Interior Living Area	85,17 m ²
- Usable area of covered terrace	22,30 m ²
- Usable area of uncovered terrace	101,13 m ²
- Total usable area of the dwelling	208,59 m ²
- Living Area Interior Built. + zzcc	122,62 m ²
- Total Constructed Area	247,27 m ²

Design elements including terraces shape and dimensions may be modified for technical reasons



PENTHOUSE B | BLQ 1

- Usable Interior Living Area	108,71 m ²
- Usable area of covered terrace	31,85 m ²
- Usable area of uncovered terrace	155,81 m ²
- Total usable area of the dwelling	296,37 m ²
- Living Area Interior Built. + zzcc	152,26 m ²
- Total Constructed Area	340,79 m ²

Design elements including terraces shape and dimensions may be modified for technical reasons



PENTHOUSE B | BLQ 2

- Usable Interior Living Area	88,85 m ²
- Usable area of covered terrace	18,77 m ²
- Usable area of uncovered terrace	88,39 m ²
- Total usable area of the dwelling	196,01 m ²
- Living Area Interior Built. + zzcc	129,04 m ²
- Total Constructed Area	237,03 m ²

Design elements including terraces shape and dimensions may be modified for technical reasons



APARTMENT 0A | BLQ 1

- Usable Interior Living Area	122,22 m ²
- Usable area of covered terrace	41,26 m ²
- Usable area of uncovered terrace	36,06 m ²
- Total usable area of the dwelling	199,54 m ²
- Living Area Interior Built. + zzcc	170,34 m ²
- Total Constructed Area	254,27 m ²

Design elements including terraces shape and dimensions may be modified for technical reasons



APARTMENT 0A | BLQ 2

- Usable Interior Living Area	122,24 m ²
- Usable area of covered terrace	42,71 m ²
- Usable area of uncovered terrace	9,20 m ²
- Total usable area of the dwelling	174,12 m ²
- Living Area Interior Built. + zzcc	170,44 m ²
- Total Constructed Area	226,80 m ²

Design elements including terraces shape and dimensions may be modified for technical reasons



APARTMENT 0A | BLQ 2

- Usable Interior Living Area	145,17 m ²
- Usable area of covered terrace	21,59 m ²
- Usable area of uncovered terrace	45,02 m ²
- Total usable area of the dwelling	211,79 m ²
- Living Area Interior Built. + zzcc	201,11 m ²
- Total Constructed Area	273,37 m ²

Design elements including terraces shape and dimensions may be modified for technical reasons



APARTMENT 1C, 2C, 3C | BLQ 1

- Usable Interior Living Area	102,88 m ²
- Usable area of covered terrace	14,64 m ²
- Usable area of uncovered terrace	0,00 m ²
- Total usable area of the dwelling	117,52 m ²
- Living Area Interior Built. + zzcc	142,82 m ²
- Total Constructed Area	157,87 m ²

Design elements including terraces shape and dimensions may be modified for technical reasons



APARTMENT 1B, 2B, 3B | BLQ 1

- Usable Interior Living Area	67,49 m ²
- Usable area of covered terrace	14,43 m ²
- Usable area of uncovered terrace	0,00 m ²
- Total usable area of the dwelling	83,91 m ²
- Living Area Interior Built. + zzcc	97,90 m ²
- Total Constructed Area	114,75 m ²

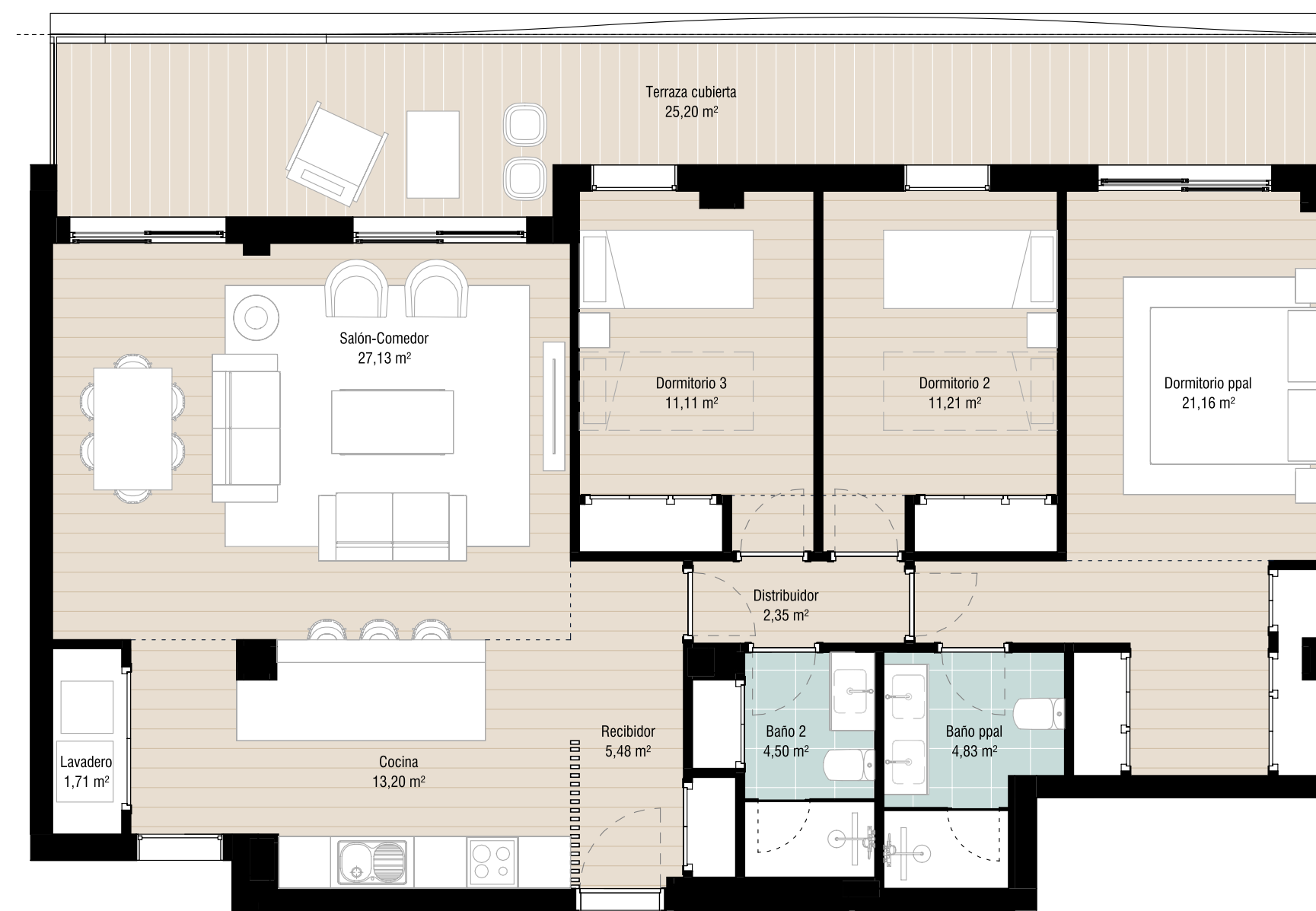
Design elements including terraces shape and dimensions may be modified for technical reasons



APARTMENT 1C, 2C, 3C | BLQ 1

- Usable Interior Living Area	99,13 m ²
- Usable area of covered terrace	86,62 m ²
- Usable area of uncovered terrace	0,00 m ²
- Total usable area of the dwelling	185,75 m ²
- Living Area Interior Built. + zzcc	140,94 m ²
- Total Constructed Area	229,25 m ²

Design elements including terraces shape and dimensions may be modified for technical reasons



APARTMENT 1A, 2A, 3A | BLQ 2

- Usable Interior Living Area	102,58 m ²
- Usable area of covered terrace	25,20 m ²
- Usable area of uncovered terrace	0,00 m ²
- Total usable area of the dwelling	127,78 m ²
- Living Area Interior Built. + zzcc	143,81 m ²
- Total Constructed Area	169,53 m ²

Design elements including terraces shape and dimensions may be modified for technical reasons