



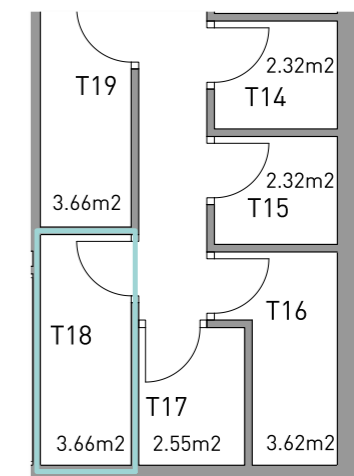
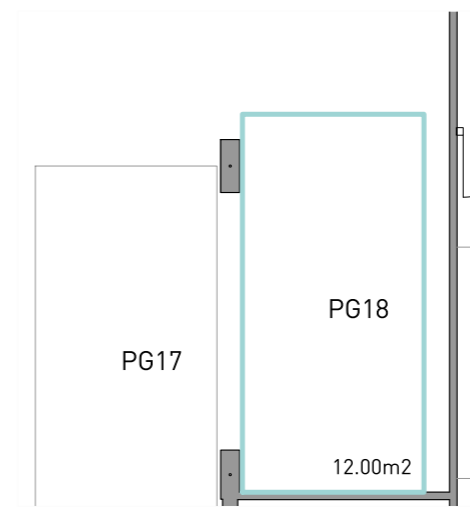
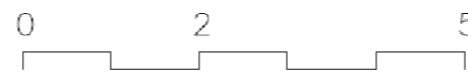
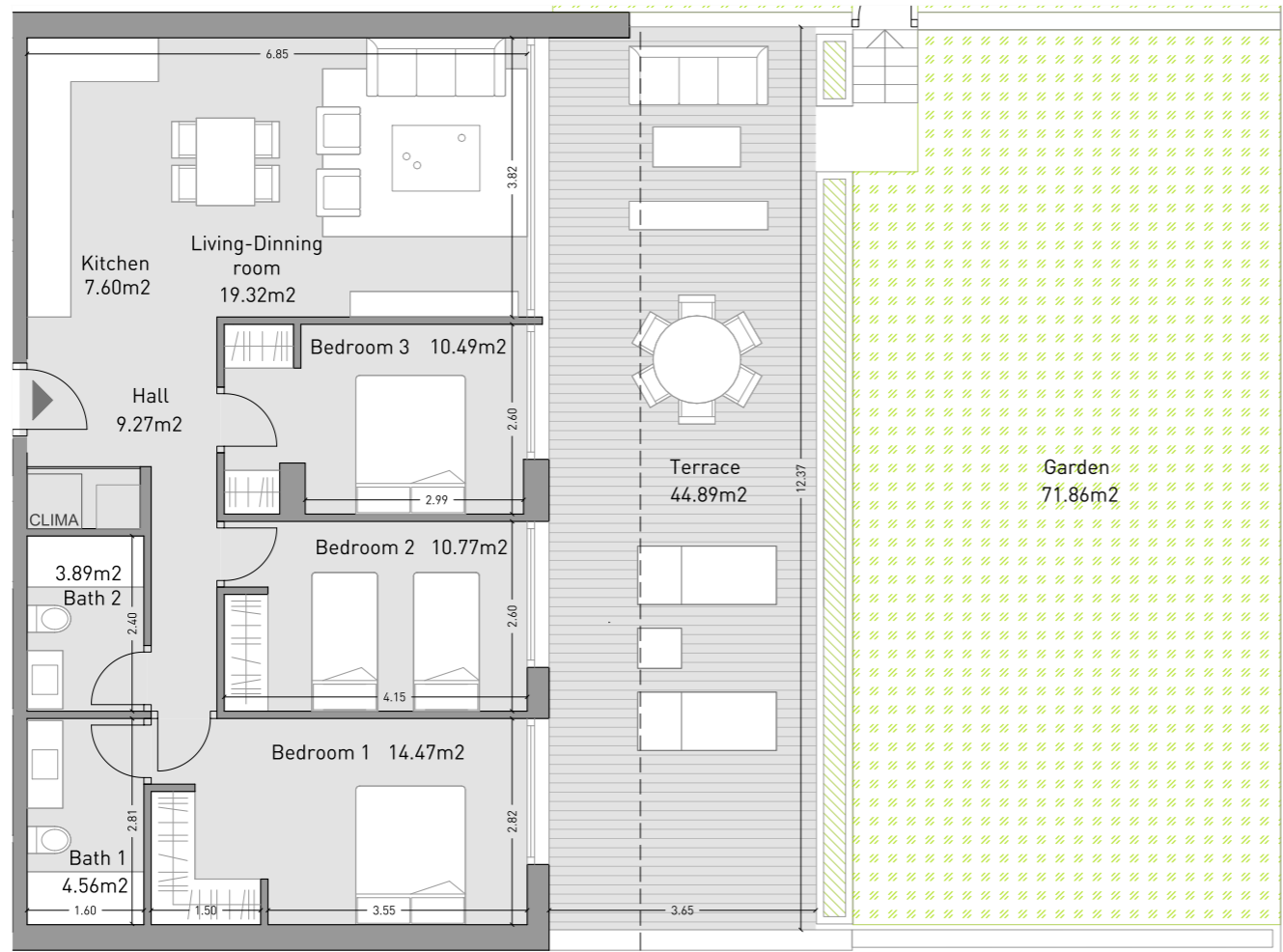
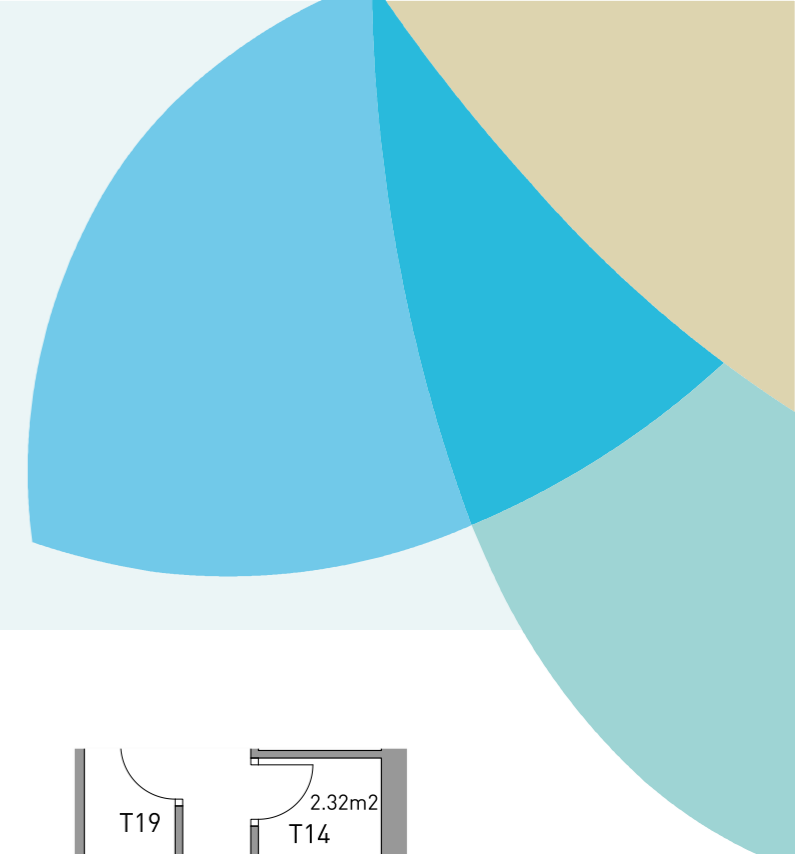
**ISEA**  
ESTEPONA

# Apartment 0.2

Vivienda

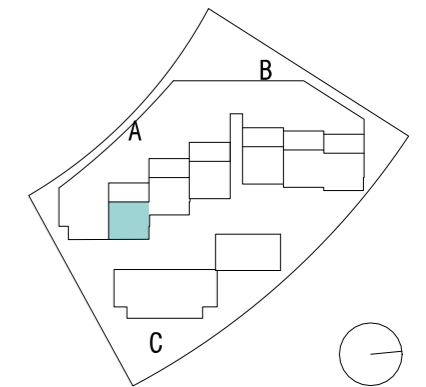
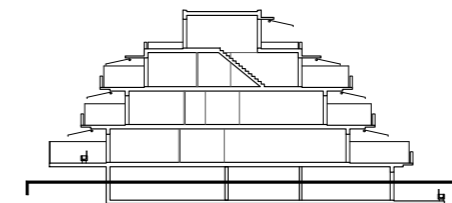
Garden floor. Block A  
Planta Jardín. Bloque A

Enclosed Built Area Sup. Construida Cerrada	92,09 sqm.
Terrace Built Area Sup. Construida Terraza	52,67 sqm.
Common Areas Built Area Sup. Construida Zona Común	104,92 sqm.
Usable Area Sup. útil vivienda	80,37 sqm.
Usable Area (Decreto 218/2015) Sup. útil vivienda (Decreto 218/2015)	96,03 sqm.



Garage and storage room  
Plaza de garaje y trastero

Building / Edificio A



NOTE: This plan is provisional and subject to any changes that may arise from licensing requirements or technical management criteria, without compromising quality. The furniture and household items that appear in the plan, including furniture, wardrobes and appliances, are merely for decorative purposes and are not included in the apartment. The location of the bathroom fixtures may vary slightly depending on the final assembly. The imperative determinations of the Project or by implications works of the execution, can change the exact position of the facade of doors and windows, as well the surface area may also be increased or even decrease not more than a 10%. This is a non-contractual document.

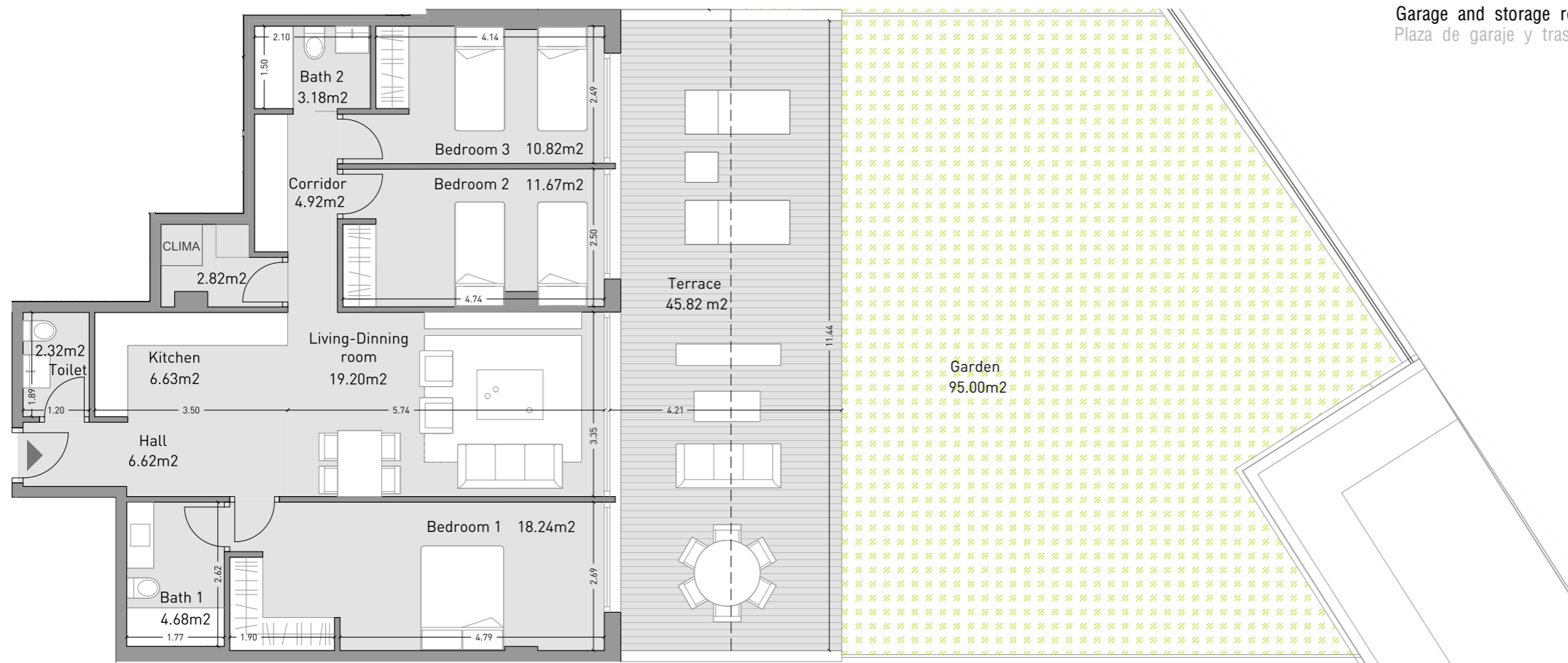
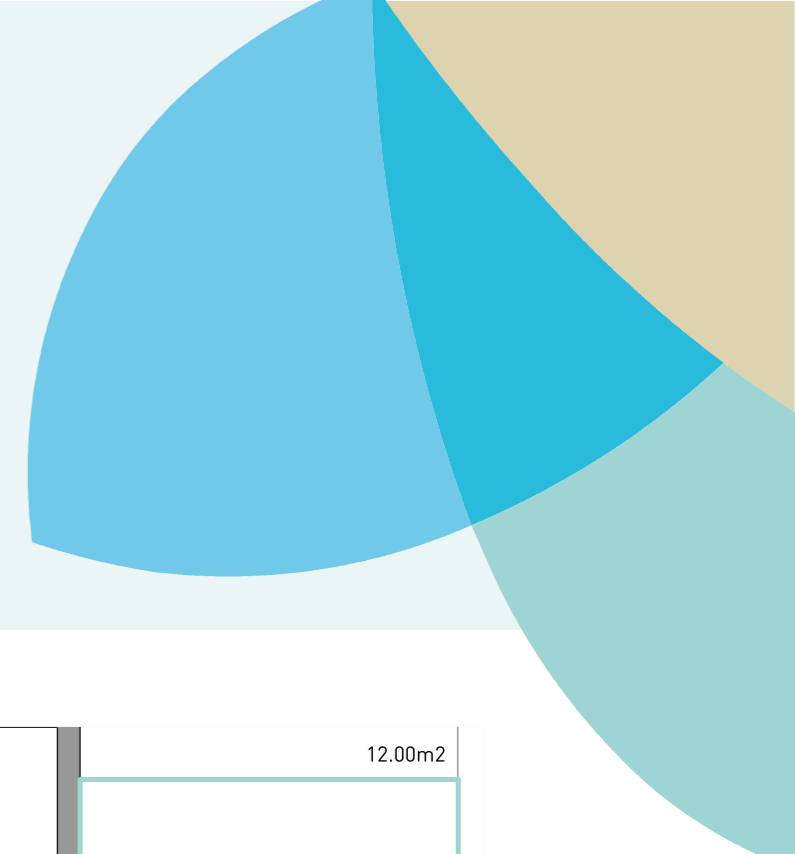


**ISEA**  
ESTEPONA

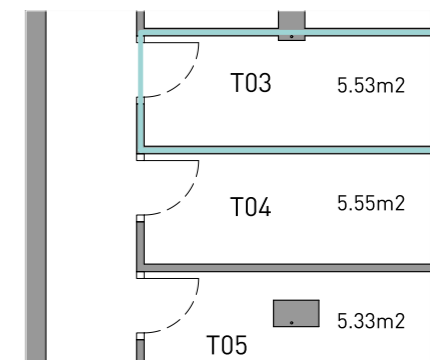
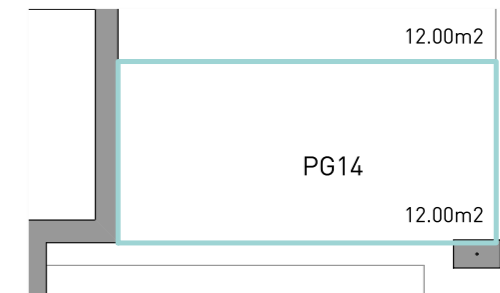
# Apartment Vivienda **0.8C**

Garden floor. Block C  
Planta Jardín. Bloque C

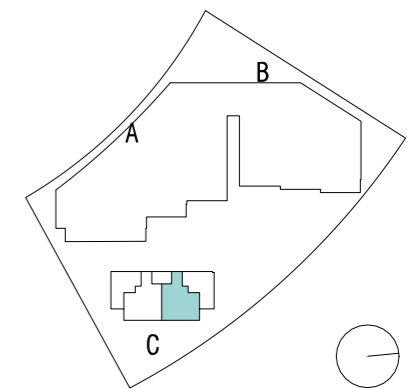
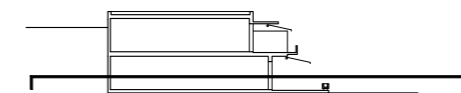
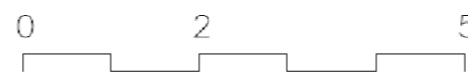
<b>Enclosed Built Area</b> Sup. Construida Cerrada	<b>102,34 sqm.</b>
<b>Terrace Built Area</b> Sup. Construida Terraza	<b>46,98 sqm.</b>
<b>Common Areas Built Area</b> Sup. Construida Zona Común	<b>116,60 sqm.</b>
<b>Usable Area</b> Sup. útil vivienda	<b>91,10 sqm.</b>
<b>Usable Area (Decreto 218/2015)</b> Sup. útil vivienda (Decreto 218/2015)	<b>108,63 sqm.</b>



Garage and storage room  
Plaza de garaje y trastero



Building / Edificio C



NOTE: This plan is provisional and subject to any changes that may arise from licensing requirements or technical management criteria, without compromising quality. The furniture and household items that appear in the plan, including furniture, wardrobes and appliances, are merely for decorative purposes and are not included in the apartment. The location of the bathroom fixtures may vary slightly depending on the final assembly. The imperative determinations of the Project or by implications works of the execution, can change the exact position of the facade of doors and windows, as well the surface area may also be increased or even decrease not more than a 10%. This is a non-contractual document.



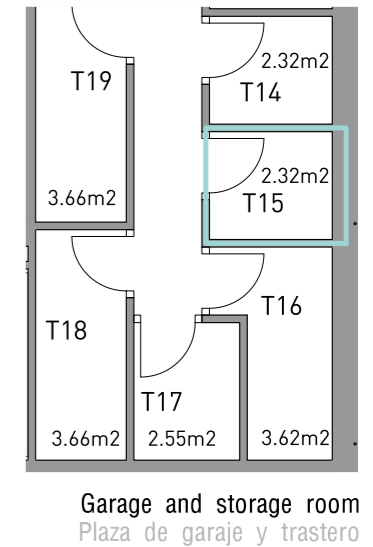
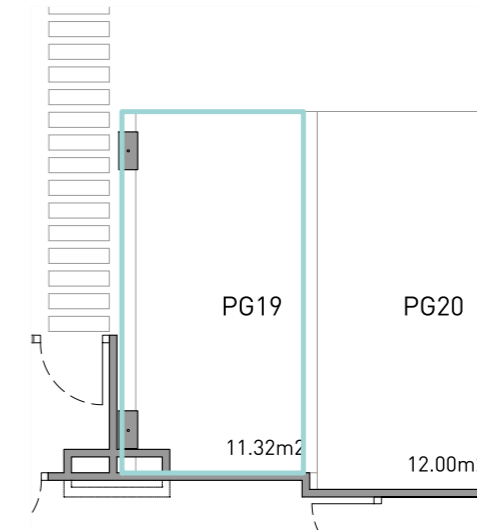
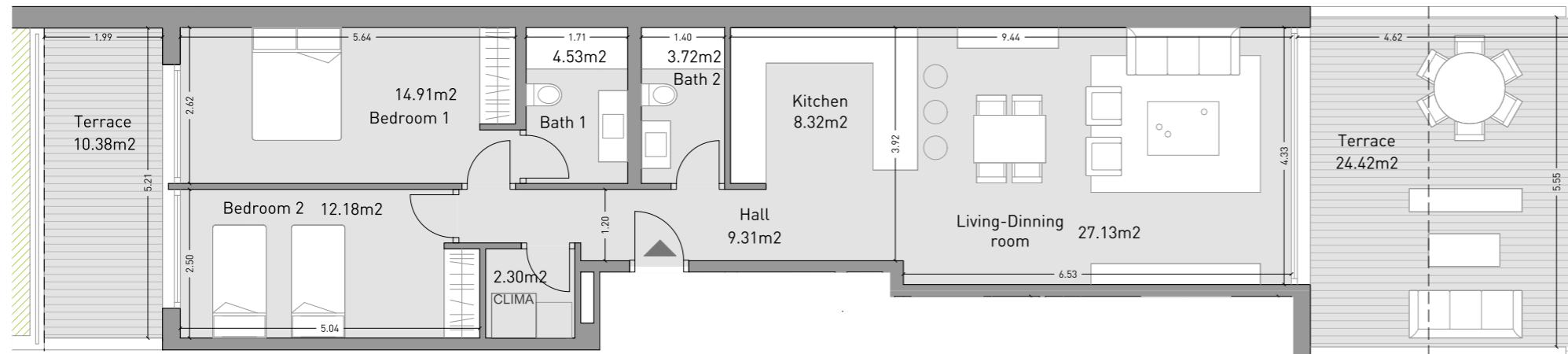
**ISEA**  
ESTEPONA

# Apartment 1.2B

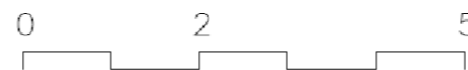
Vivienda

Ground floor. Block A  
Planta Baja. Bloque A

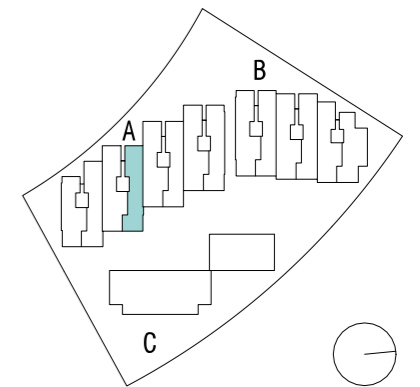
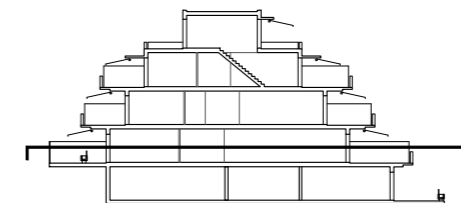
Enclosed Built Area Sup. Construida Cerrada	94,92 sqm.
Terrace Built Area Sup. Construida Terraza	37,59 sqm.
Common Areas Built Area Sup. Construida Zona Común	108,14 sqm.
Usable Area Sup. útil vivienda	82,40 sqm.
Usable Area (Decreto 218/2015) Sup. útil vivienda (Decreto 218/2015)	96,04 sqm.



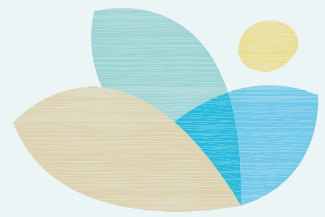
Garage and storage room  
Plaza de garaje y trastero



Building / Edificio A



NOTE: This plan is provisional and subject to any changes that may arise from licensing requirements or technical management criteria, without compromising quality. The furniture and household items that appear in the plan, including furniture, wardrobes and appliances, are merely for decorative purposes and are not included in the apartment. The location of the bathroom fixtures may vary slightly depending on the final assembly. The imperative determinations of the Project or by implications works of the execution, can change the exact position of the facade of doors and windows, as well the surface area may also be increased or even decrease not more than a 10%. This is a non-contractual document.



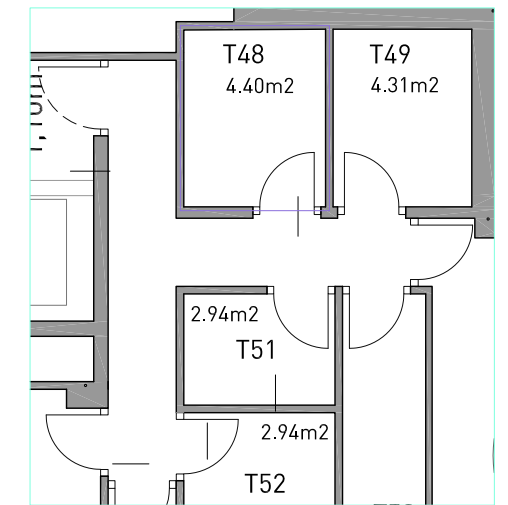
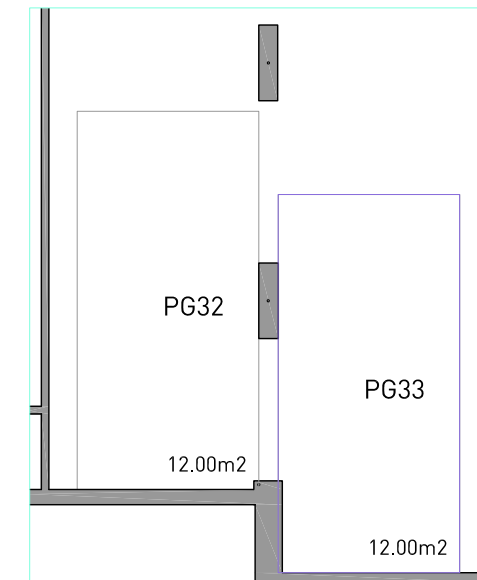
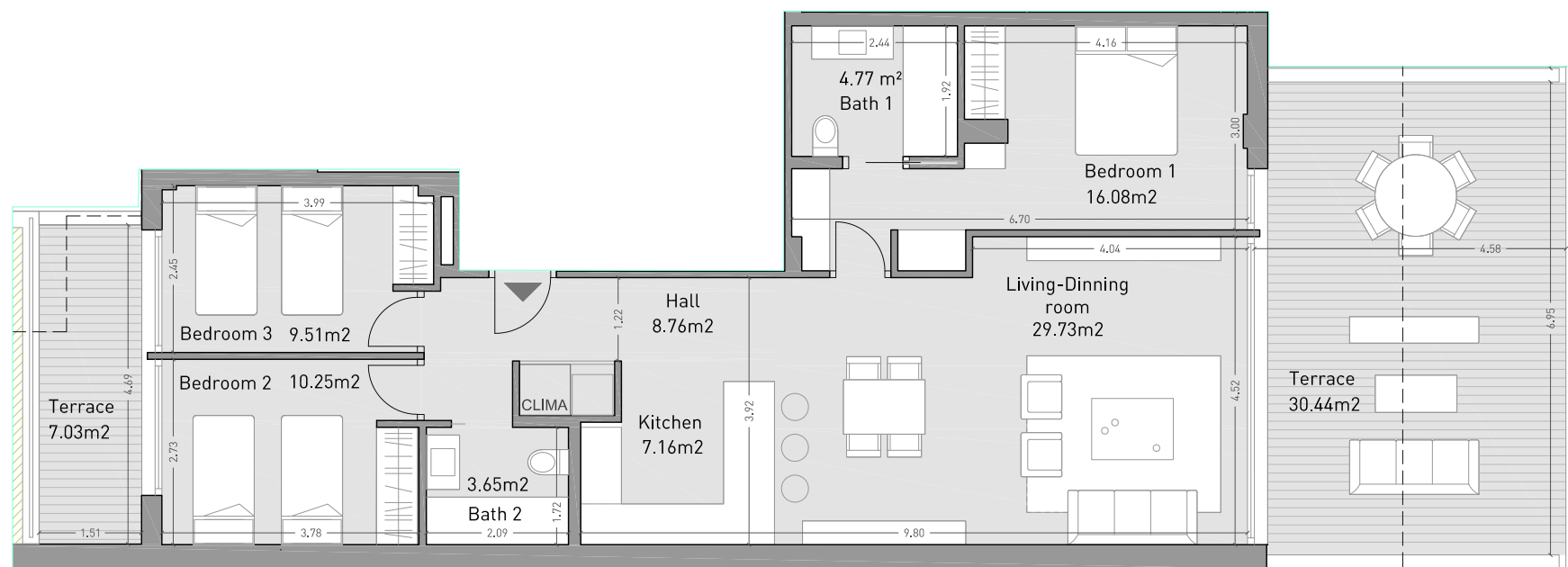
**ISEA**  
ESTEPONA

# Apartment 1.7A

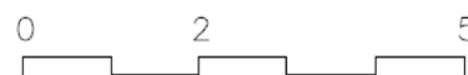
Vivienda

Ground floor. Block B  
Planta Baja. Bloque B

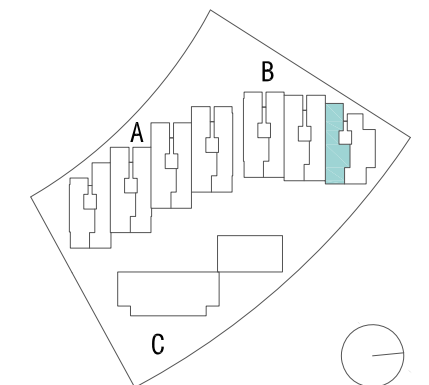
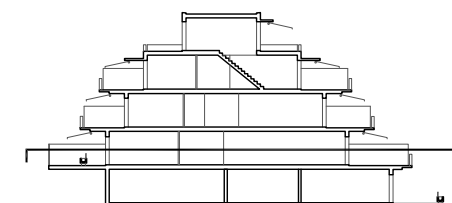
<b>Enclosed Built Area</b> Sup. Construida Cerrada	102,50 sqm.
<b>Terrace Built Area</b> Sup. Construida Terraza	40,79 sqm.
<b>Common Areas Built Area</b> Sup. Construida Zona Común	116,78 sqm.
<b>Usable Area</b> Sup. útil vivienda	89,91 sqm.
<b>Usable Area (Decreto 218/2015)</b> Sup. útil vivienda (Decreto 218/2015)	106,31 sqm.



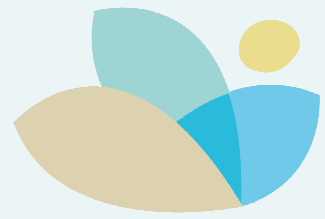
Garage and storage room  
Plaza de garaje y trastero



Building / Edificio B



NOTE: This plan is provisional and subject to any changes that may arise from licensing requirements or technical management criteria, without compromising quality. The furniture and household items that appear in the plan, including kitchen furniture, wardrobes and appliances, are merely for decorative purposes and are not included in the apartment. The location of the bathroom fixtures may vary slightly depending on the final assembly. The imperative determinations of the Executive Project or by implications works of the execution, can change the exact position of the facade of doors and windows, as well the surface area may also be increased or even decrease not more than a 10%. This is a non-contractual document.



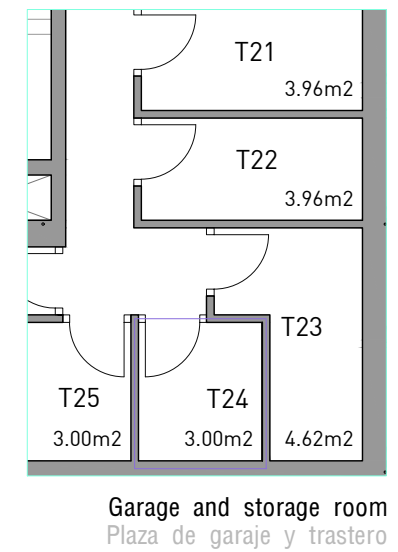
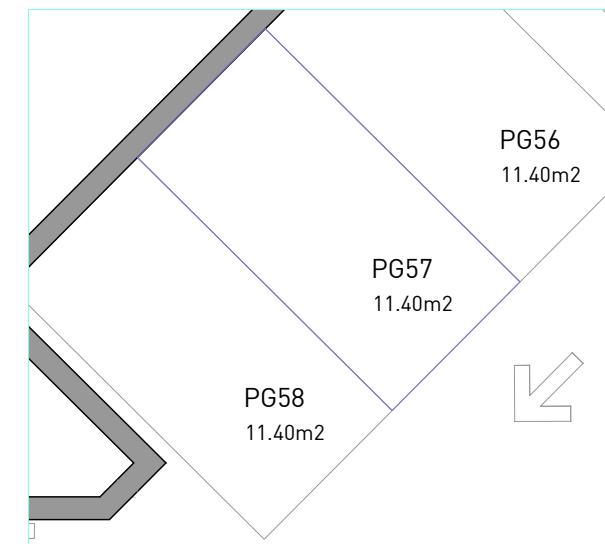
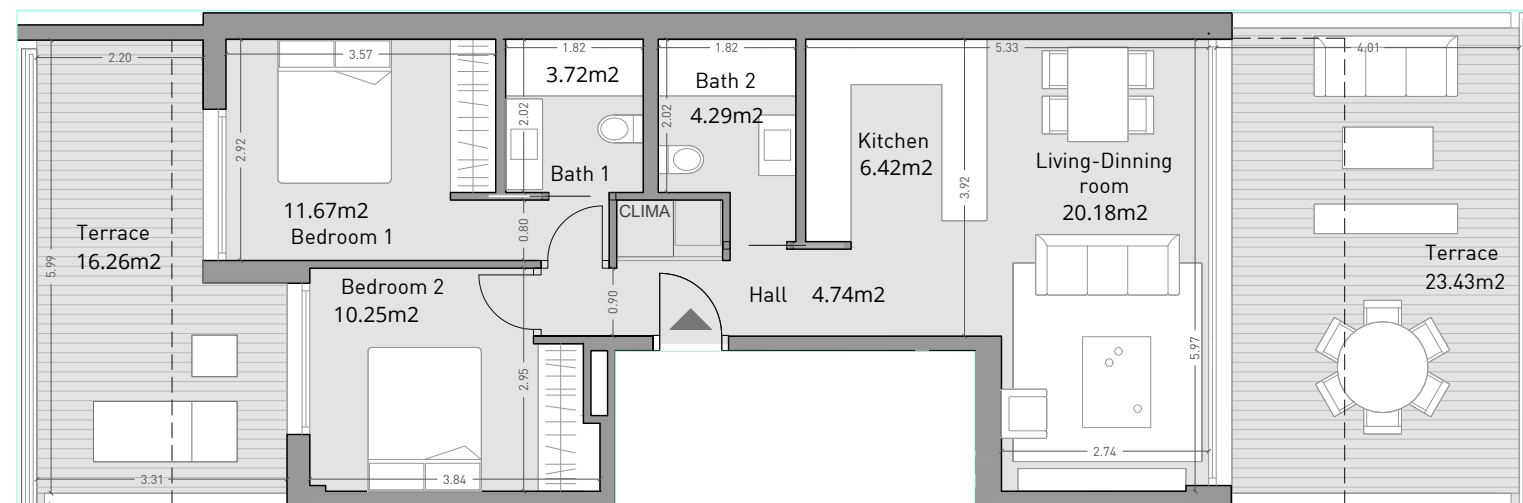
**ISEA**  
ESTEPONA

# Apartment 3.3B

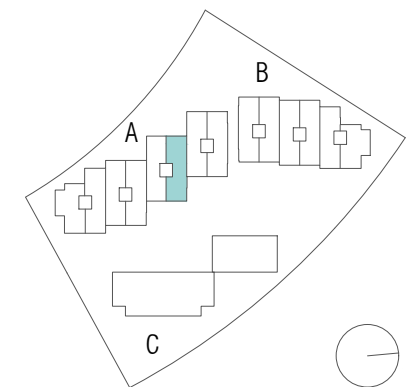
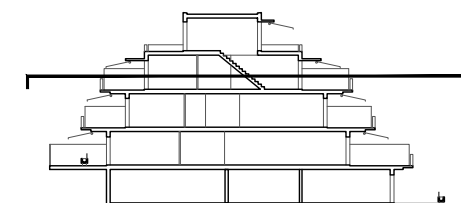
Vivienda

Second floor. Block A  
Planta Segunda. Bloque A

Enclosed Built Area <i>Sup. Construida Cerrada</i>	72,57 sqm.
Terrace Built Area <i>Sup. Construida Terraza</i>	43,35 sqm.
Common Areas Built Area <i>Sup. Construida Zona Común</i>	82,68 sqm.
Usable Area <i>Sup. útil vivienda</i>	61,27 sqm.
Usable Area (Decreto 218/2015) <i>Sup. útil vivienda (Decreto 218/2015)</i>	75,67 sqm.



Building / Edificio A



NOTE: This plan is provisional and subject to any changes that may arise from licensing requirements or technical management criteria, without compromising quality. The furniture and household items that appear in the plan, including kitchen furniture, wardrobes and appliances, are merely for decorative purposes and are not included in the apartment. The location of the bathroom fixtures may vary slightly depending on the final assembly. The imperative determinations of the Executive Project or by implications works of the execution, can change the exact position of the facade of doors and windows, as well the surface area may also be increased or even decrease not more than a 10%. This is a non-contractual document.